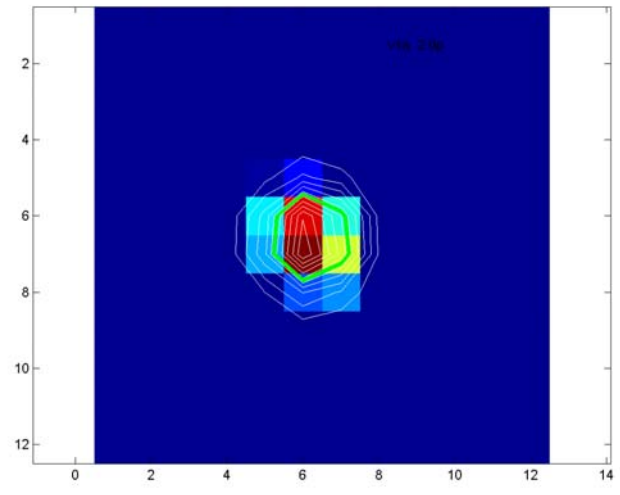
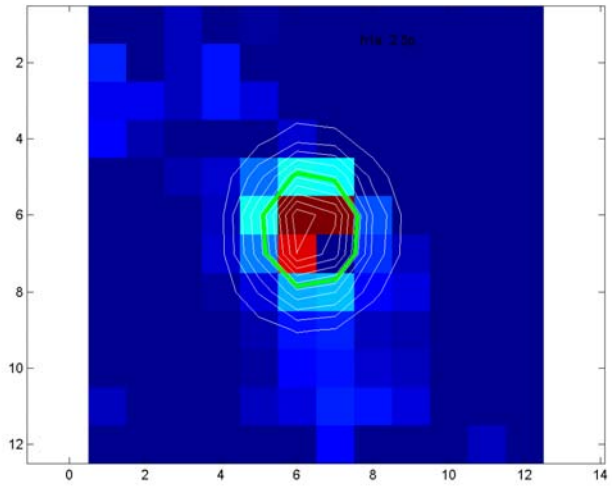


H

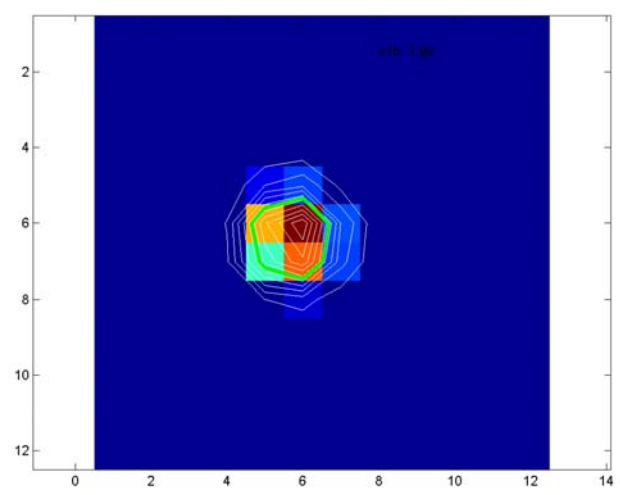
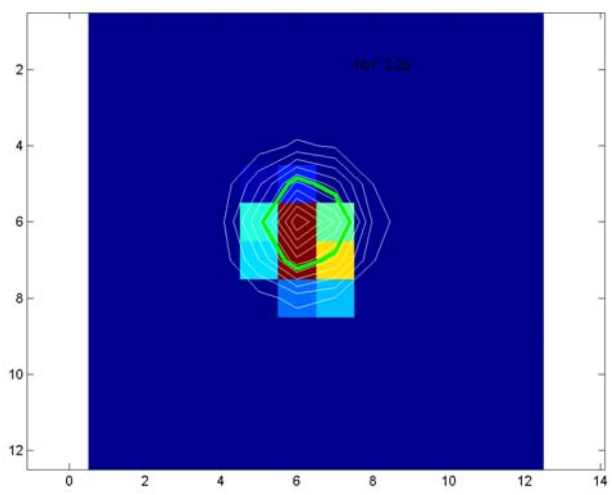
V



1a

12.1'

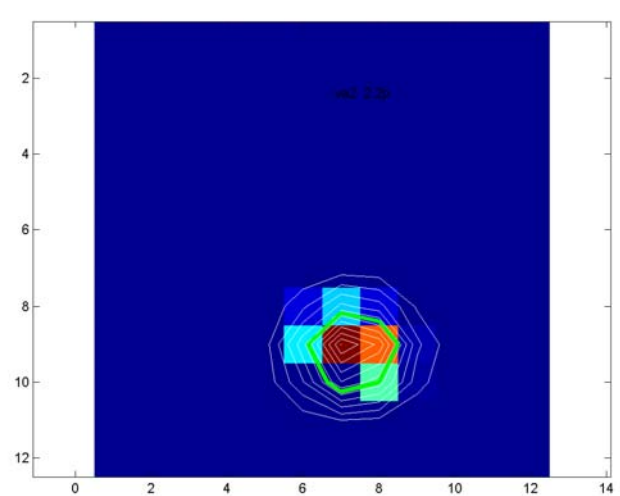
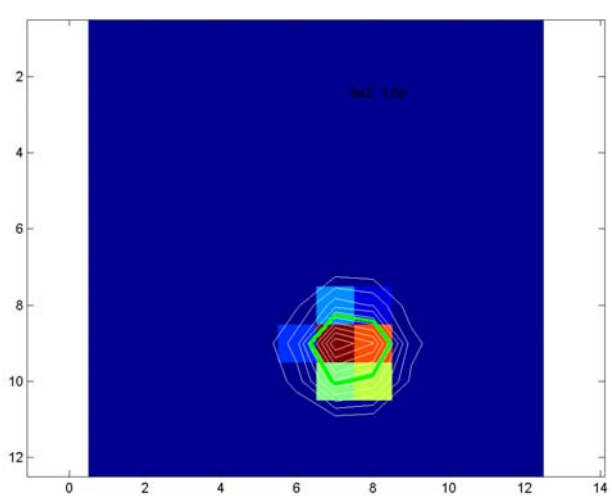
9.7'



1b

10.7'

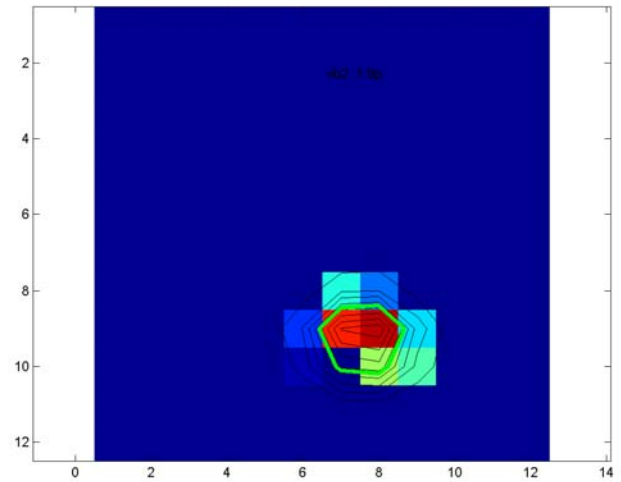
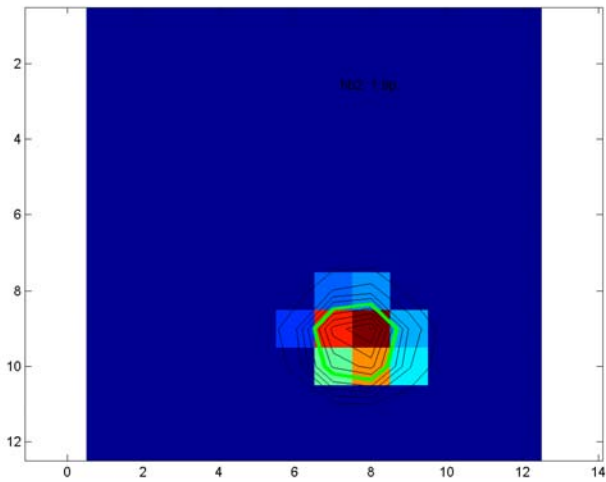
9.2'



2a

8.7'

10.7'



2b

9.2'

9.2'

1. Data sets (1a, 1b, 2a, 2b) are selected by Megan (<http://lennon.astro.northwestern.edu/CSOpol/collaborators/beam.html>).
2. The left (right) column is for H (V).
3. For 1a, 1b and 2a, the color maps show pixels with values larger than 10% of the peaks.
For 2b, which has unusual DC bias $\sim 50\%$ of the peaks, the color maps show positive pixels after subtracted by the DC bias.
4. The red numbers stand for the FWHM of the gaussian fits (contours), assuming one pixel is $4.85'$
5. The mean FWHM is $9.9'$