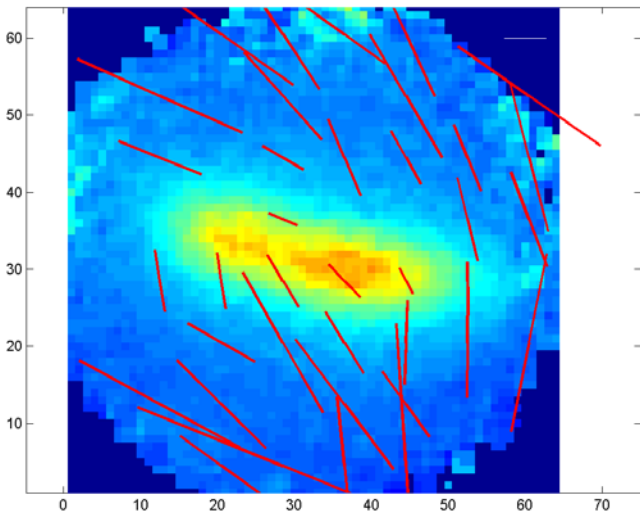
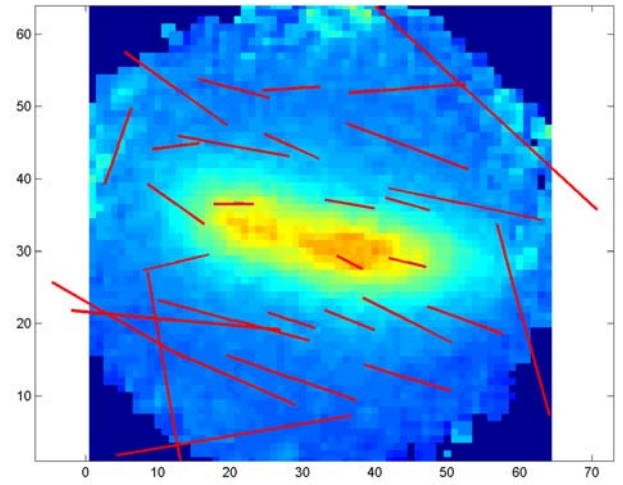


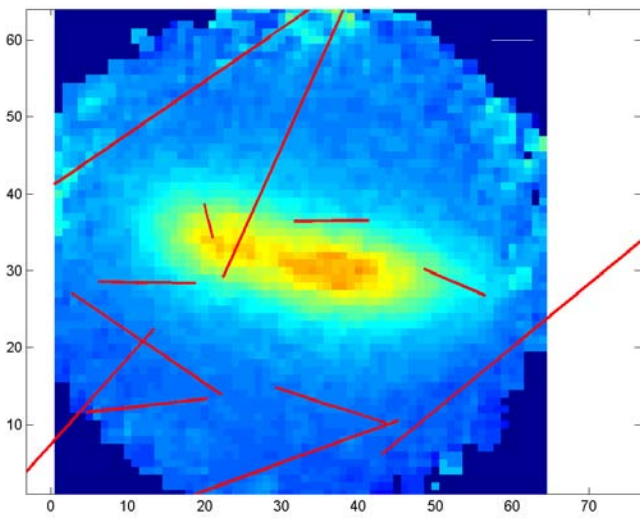
1-10



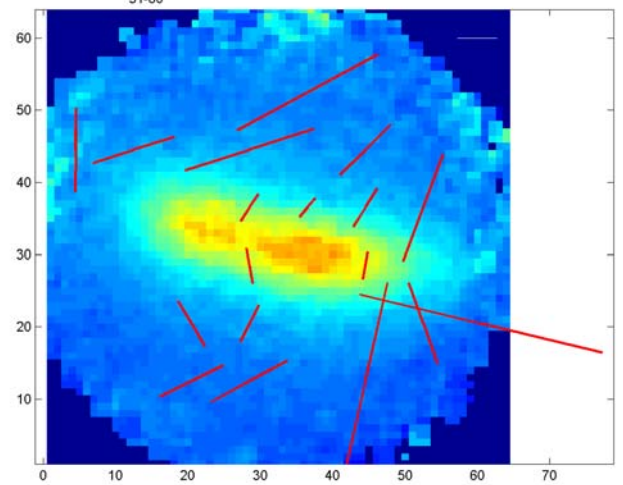
21-30



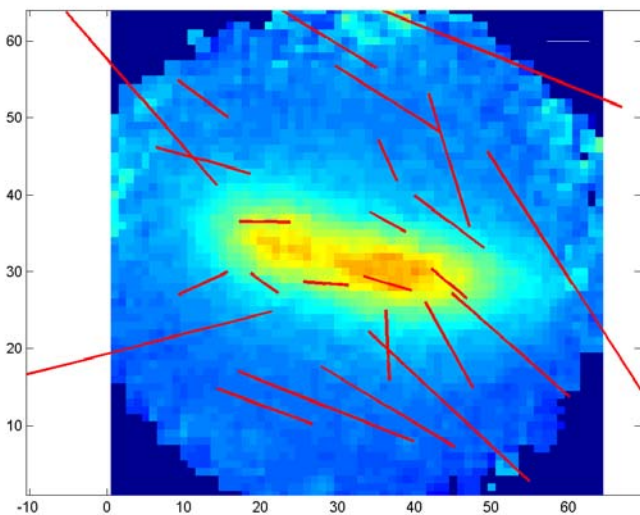
31-40



51-60



70-81



Q,U, and I are separated;

Use peak value in the I map of each cycle as “tau” correction

Each figure contains 10 cycles

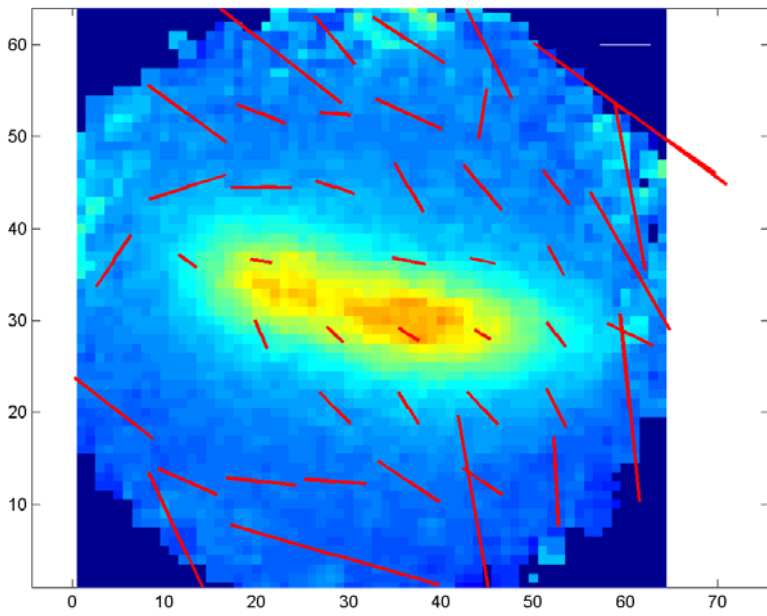
The red vectors show 2-sigma detections

The white vector in the upper right corner is a reference of 5%

2 sigma outliers of q’s and u’s are ignored

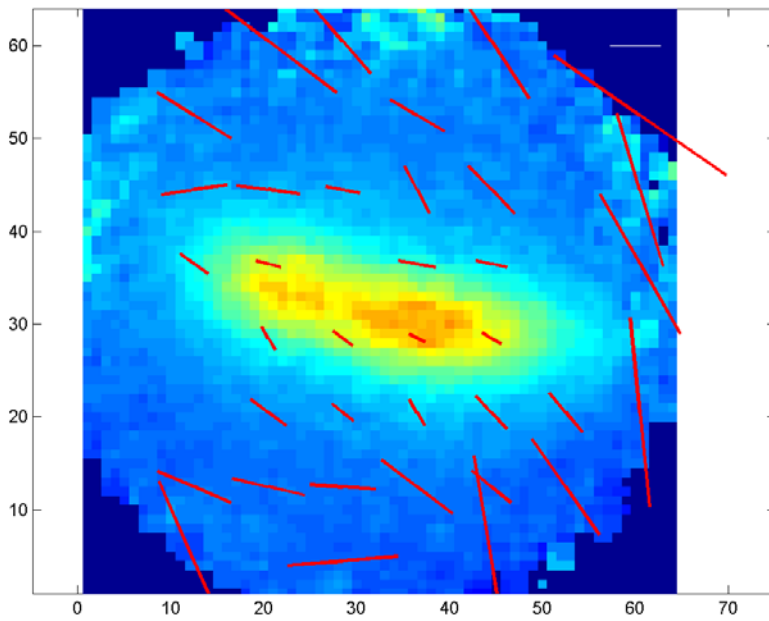
Combinations of these 5 groups are in the next page

50₁



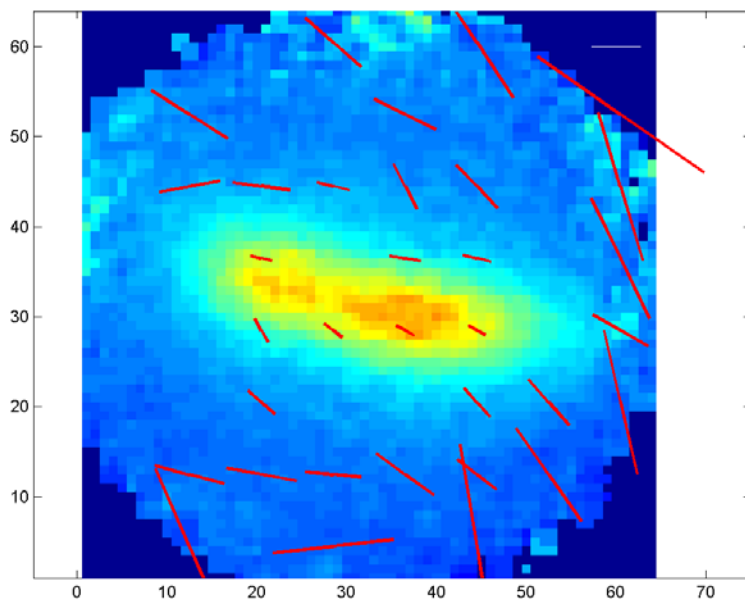
1sigma outliers of q and u are ignored

50₂



2sigma outliers are idnored

50-3



3sigma outliers are ignored