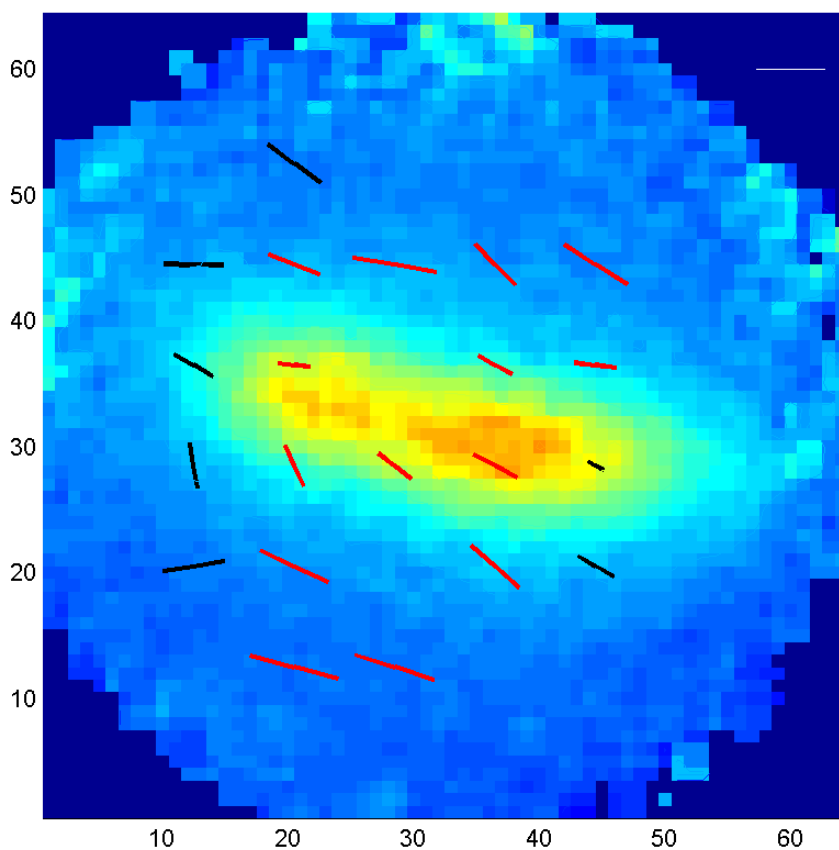
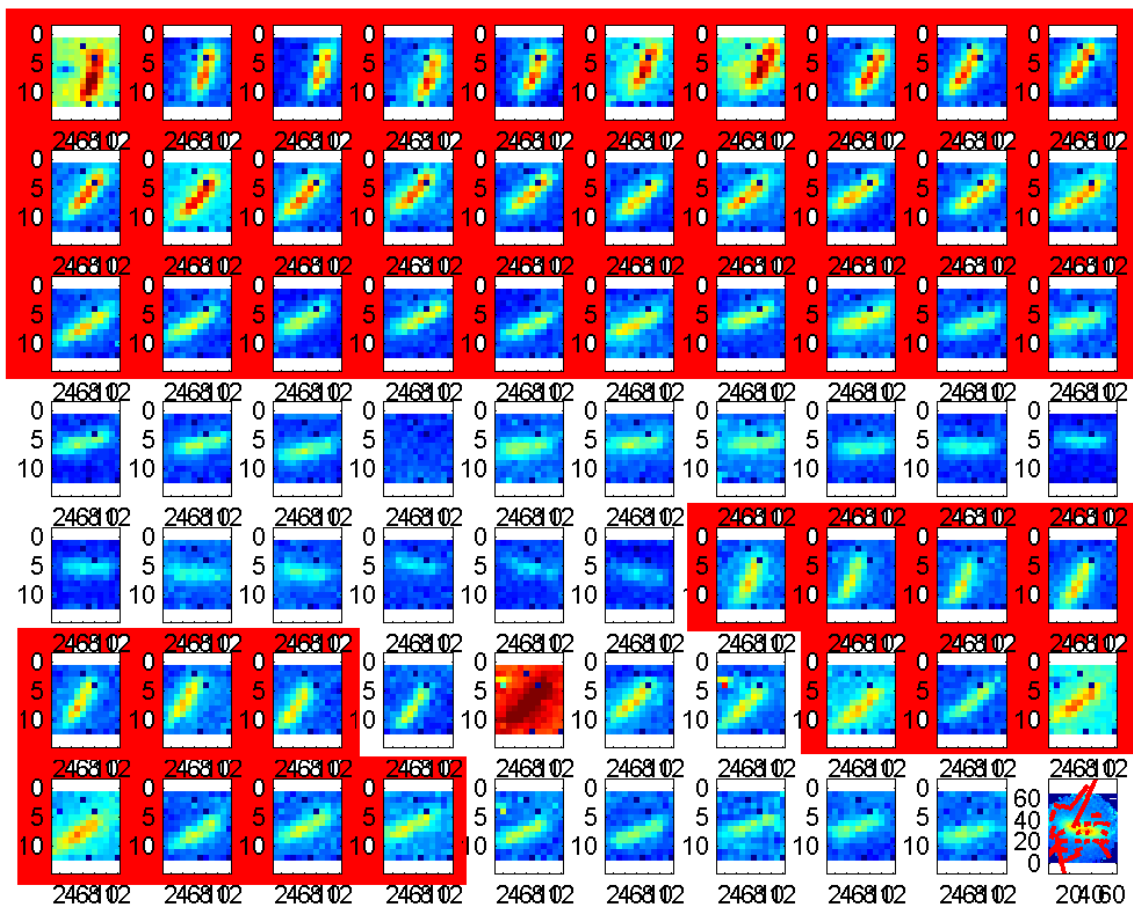


Red: good cycles



All vectors with errors $< 2\%$; blacks = 2σ detections; reds = 3σ detections; white = 5% reference

P=
0.0432 0.0478 0.0419 0.0543
0.0327 0.0242 0.0282 0.0309
0.0335 0.0327 0.0302 0.0361 0.0127
0.0452 0.0546 0.0466 0.0302
0.0666 0.0607

Perr=
0.0144 0.0170 0.0116 0.0134 0.0168
0.0110 0.0066 0.0072 0.0094
0.0144 0.0091 0.0070 0.0061 0.0062
0.0197 0.0163 0.0098 0.0134
0.0186 0.0185

Phi=
88.4493 53.6425 80.2805 224.3398 57.2324
59.2903 83.0895 60.3543 82.9567
8.7668 24.3201 51.1252 61.2426 57.0335
99.1704 64.5947 48.2098 58.6398
74.4942 72.0878

Phierr=
9.5836 10.2075 5.3907 9.1688 8.8495
9.6700 7.8542 7.2861 8.6714
12.3006 8.0112 6.5993 4.8305 13.9980
12.4851 8.5469 5.9979 12.6958
7.9886 8.7264